

# SOMALIA: HUNGER CRISIS RESPONSE

(as of 30 September 2017)



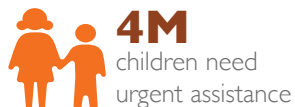
## KEY FIGURES



**6.2M**  
people in need of protection and humanitarian assistance



**3.1M**  
people in crisis and emergency



**4M**  
children need urgent assistance



**4.5M**  
people in need of water sanitation and hygiene services

## INTERNAL DISPLACEMENT



**1million+**  
people displaced internally due to drought and conflict

## HEALTH



**77,583**  
total number of suspected cholera/acute watery diarrhea cases

**53%**  
of the cholera cases are under 5 children

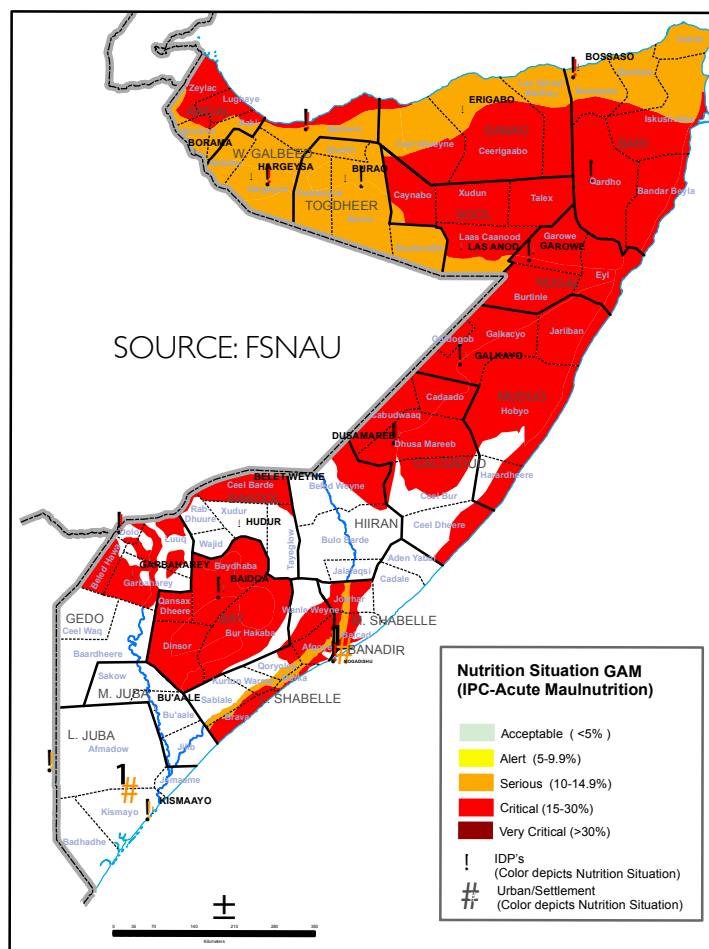
## NUTRITION



**1.5 million**  
children are projected to be acutely malnourished

**232,000**  
children are projected to be severely acutely malnourished

## ESTIMATED NUTRITION SITUATION AUGUST-OCTOBER 2017



## RESPONSE

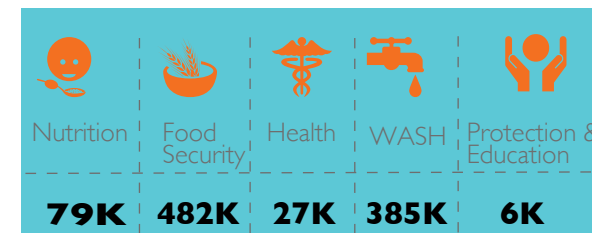


**1 million**  
people targeted for response



**803,997**  
people reached with assistance

## PEOPLE REACHED THROUGH WORLD VISION'S RESPONSE



## FUNDING

**\$37M** requested for hunger crisis response

**\$22.3M**  
Received

**\$14.6M**  
Funding gap

**61%**

**39%**