

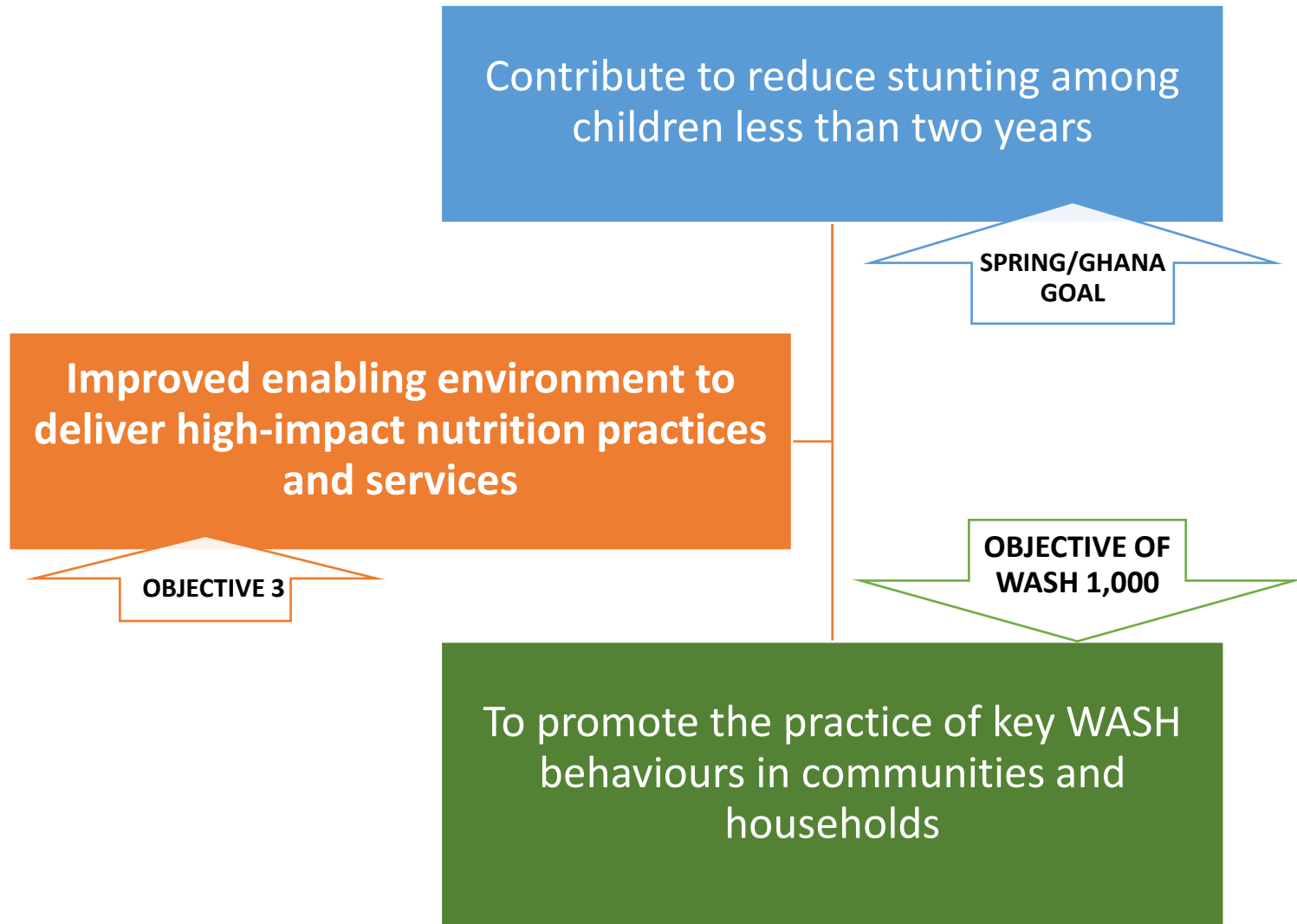
SPRING/GHANA WASH 1,000 PROGRAM

David Amissah Nunoo WASH Advisor

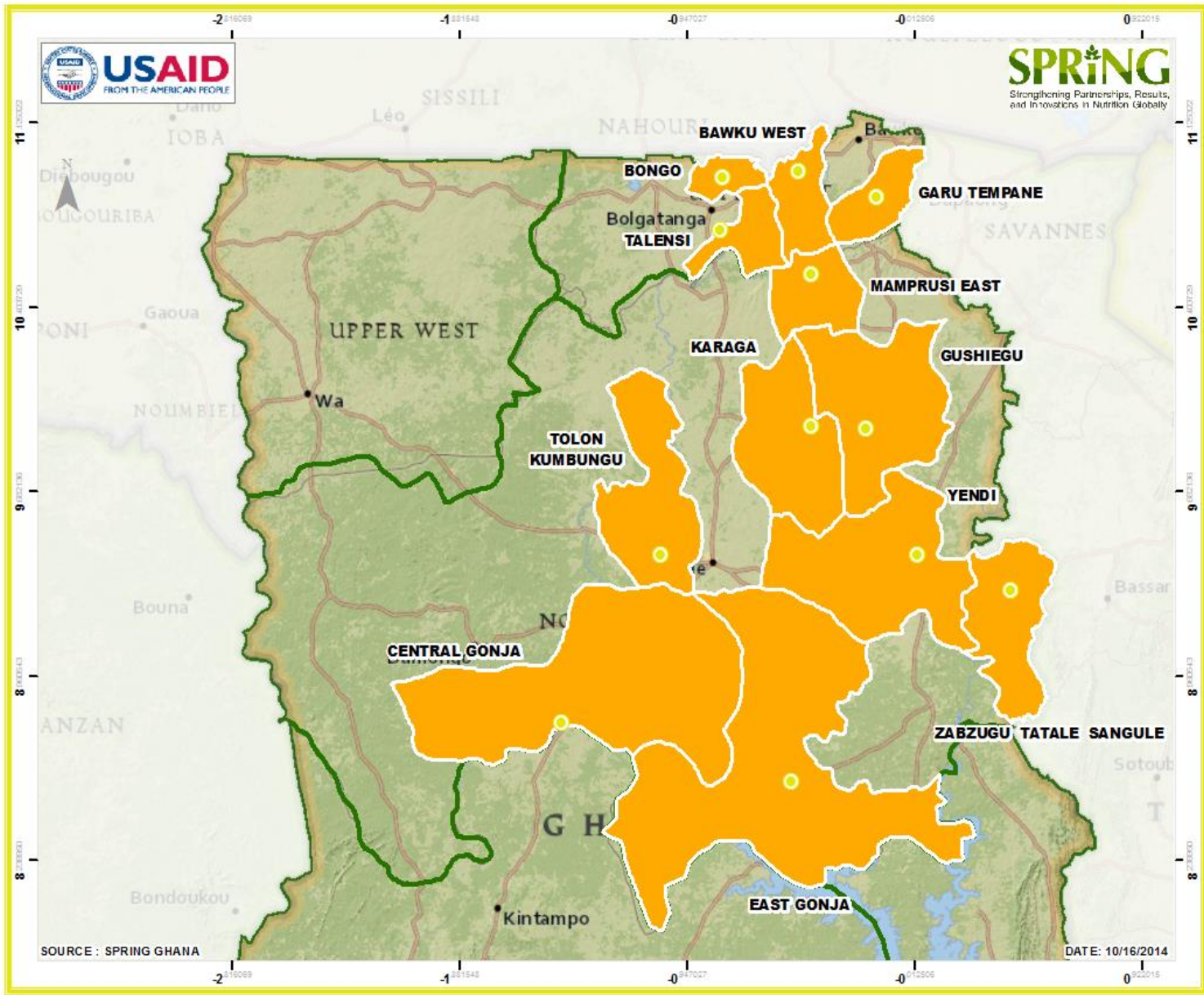
13th April, 2017



SPRING/GHANA WASH 1000 PROGRAM

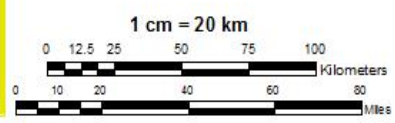


SPRING / GHANA OPERATIONAL DISTRICTS



PROJECTION INFORMATION

Projection: Transverse Mercator
 False Easting: 900000.000000
 False Northing: 0.000000
 Central Meridian: -1.000000
 Scale Factor: 0.999750
 Latitude Of Origin: 4.666667
 Linear Unit: Foot Gold Coast (0.304800)



WHY WASH 1000

- High rate of Open defecation
- High diarrheal rates especially among children
- High level of malnutrition especially stunting and anemia
- Low adoption of household water treatment and storage
- High contamination rate
- Improper waste disposal
- Poor WASH practices
- Project focused on first 1000 days

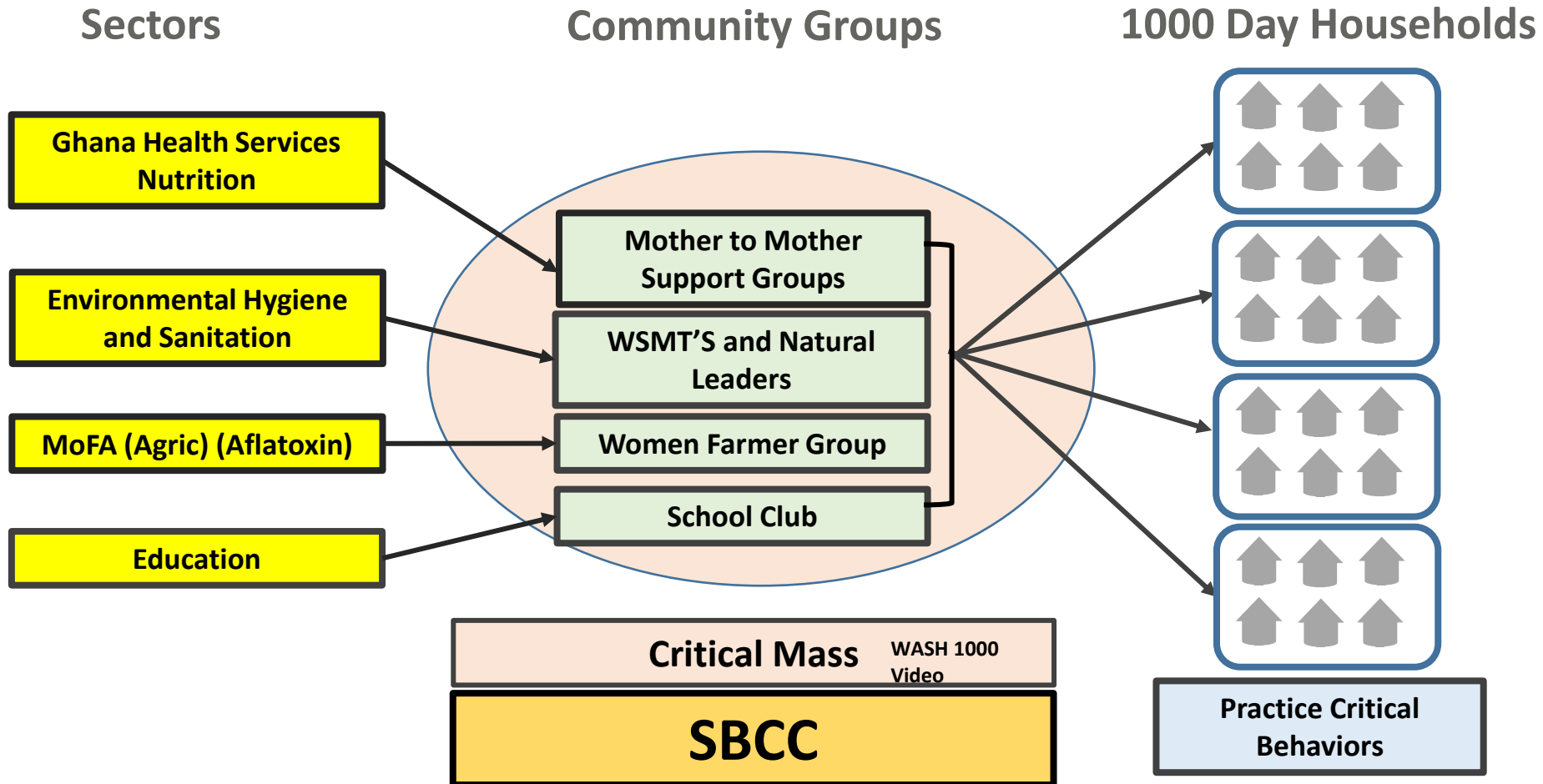


WASH 1000 Implementation Strategy

- Scoping visits to Districts/communities
- Development of focus key behaviors
- Infuse WASH 1000 key behaviors into the standard CLTS approach
- Capacity Building of District Environmental Health Officers
- Developed the WASH 1000 video
- Integrate WASH 1000 key behaviors into Nutrition (IYCF) and Agric trainings (FFS)
- Identification of viable community leaders i.e Natural leaders and WSMTs (Water and Sanitation Management Teams)
- Learning tours organized between communities
- Follow up visits
- Household Education



A Multi Sectoral Approach



Focused WASH 1000 Key Behaviors



Safe disposal of feces (children, adult and animal)



Hand washing with soap or ash



Boiling of water



Clean play space



RESULTS



Latrines
6,175



Tippy Taps
8,462



ODF Communities
153/300



72 Schools



Lessons Learnt

- High rate of ODF achievement in Northern Ghana
- Rapid community adoption of WASH activities
- Enhanced community ownership
- Multiple channel of information dissemination based on integrated delivery approach (Nutrition and Agric)
- Focus on the 1000 day household
- Linkage between WASH behaviors and children's growth using child health record card/chart
- Improved government staff capacity and sustainability approach



Challenges

- High drought and inadequate access to safe water in communities
- Low government funding
- Low literacy level
- Inadequate government personnel for follow ups



PICTURE GALLERY

Emmanuel Loteba 14 years built latrine in 4 days



Latrine fitted with handwashing facility



PICTURE GALLERY

Community Leaders watching Advocacy Video



WASH 1000 VIDEOS



PICTURE GALLERY

Mother to Mother Support Group Radio Discussion



Famer Field School Session



OPEN DEFECTION FREE LEAGUE TABLE

FIRST OPEN DEFECTION FREE

SECOND OPEN DEFECTION FREE

OPEN DEFECTION FREE (ODF) LEAGUE TABLE

NORTHERN REGIONAL COORDINATING COUNCIL (RCC)
ENVIRONMENTAL HEALTH AND SANITATION UNIT (EHSU)
REGIONAL INTER-AGENCY COORDINATING COMMITTEE ON SANITATION (RICCS)
RESULTS OF ODF LEAGUE TABLE, JUNE, 2016

#	NAME OF MMDA	% OF ODF COM. AND ODF RELATED SCORE (A)	% OF HOUSEHOLD TOILET COVERAGE SCORE (B)	ODF-C COORDINATION AND SUPPORT SCORE (C)	TOTAL % SCORE (D) A+B+C+D	ODF POSITION	REMARKS
1	MAIDOM	16%	1%	1%	20%	1st	
2	EAST MAMPRUJI	34%	2%	9%	45%	2nd	
3	KARAGA	34%	2%	8%	44%	3rd	
4	BANUMBA NORTH	32%	2%	7%	41%	4th	
5	TATALE	27%	10%	2%	39%	5th	
6	ZAVUUGU	33%	3%	2%	37%	6th	
7	VENDI	31%	2%	4%	37%	7th	
8	EAST GONJA	28%	2%	6%	36%	8th	
9	SABOBA	12%	2%	1%	15%	9th	
10	CENTRAL GONJA	25%	2%	2%	29%	10th	
11	KUMBINGU	26%	0%	2%	28%	11th	
12	GUSHUGU	23%	8%	3%	34%	12th	
13	TOLON	25%	0%	3%	32%	13th	
14	KPANDAI	23%	0%	1%	24%	14th	
15	BANUMBA SOUTH	23%	2%	3%	28%	15th	
16	SAVELUGU	15%	4%	7%	26%	16th	
17	CHEREPONI	0%	4%	10%	14%	17th	
18	SAGGARIGU	0%	2%	7%	9%	18th	
19	SAWLA/TUNA/KALBA	0%	2%	7%	9%	19th	
20	WEST GONJA	0%	0%	0%	0%	20th	
21	MAMPRUGU MOADURI	0%	4%	4%	8%	21st	
22	TAMALE METRO	0%	2%	2%	4%	22nd	
23	BOLE	0%	2%	4%	6%	23rd	
24	WEST MAMPRUJI	0%	4%	4%	8%	24th	
25	NORTH GONJA	0%	2%	1%	3%	25th	
26	BURKUPURUGU	0%	2%	0%	2%	26th	

Remarks: Maidom is the district with the least % of people who practice Open Defecation in Northern Region.
Bunkpurugu is the district with the highest % of residence who Defecate in the Open in Northern Region.

Coordinated by EHSU

2ND OPEN DEFECTION FREE LEAGUE TABLE

NORTHERN REGIONAL COORDINATING COUNCIL
REGIONAL INTER-AGENCY COORDINATING COMMITTEE ON SANITATION
ENVIRONMENTAL HEALTH AND SANITATION UNIT
RESULTS OF ODF LEAGUE TABLE, JUNE, 2016

NAME OF DISTRICT	SCORE ON % OF HOUSEHOLD TOILET COVERAGE	SCORE ON % OF ODF COM. AND RELATED SCORES	SCORE ON DISTRICT OWNERSHIP, PARTICIPATION AND COMMITMENT TO ACHIEVE ODF DISTRICT	SCORE ON ABSENCE OF OPEN DEFECATION AND PROVISION OF ADEQUATE TOILET FACILITIES IN THE ASSEMBLY PREMISES	SCORE ON LAUNCH OF DISTRICT VERSION OF ODF LEAGUE TABLE	TOTAL ODF SCORE	ODF POSITION	REMARKS
MAIDOM	5	50	10	5	0	73	1st	
SANTALBA SOUTH	4	37	7	3	4	55	2nd	
KARAGA	4	29	10	6	4	53	3rd	
ZAVUUGU	4	29	10	6	4	53	4th	
EAST GONJA	10	20	10	0	0	49	5th	
EAST MAMPRUJI	2	31	5	6	4	48	6th	
KARAGA	6	29	9	4	0	48	7th	
CHEREPONI	6	29	5	3	4	47	8th	
KUMBINGU	6	27	8	6	0	47	9th	
EAST GONJA	2	33	5	6	0	46	10th	
SABOBA	4	29	5	6	0	44	11th	
WEST GONJA	4	26	10	4	0	44	12th	
CENTRAL GONJA	2	29	8	4	0	43	13th	
VENDI	4	26	8	4	0	40	14th	
SAVELUGU	4	18	10	6	0	38	15th	
TOLON	6	20	4	6	0	36	16th	
EAST GONJA	4	18	5	6	0	33	17th	
WEST MAMPRUJI	2	13	10	6	4	32	18th	
SANTALBA SOUTH	2	14	10	5	0	31	19th	
MAIDOM	2	20	3	8	0	31	20th	
KPANDAI	2	23	3	2	0	30	21st	
BOLE	4	0	7	6	2	19	22nd	
BOLE	2	13	2	0	0	17	23rd	
WEST GONJA	2	0	9	1	4	16	24th	
MAIDOM	4	0	4	6	0	14	25th	
MAIDOM	0	0	4	6	0	10	26th	

Remarks: Maidom is the district with the highest score in the league table. Bunkpurugu is the district with the lowest score in the league table.

Compiled by EHSU

Thank you!

For more info, please contact:

Dr. Edward Bonku, COP SPRING/Ghana

ebonku@spring-nutrition.org



www.spring-nutrition.org



This presentation was made possible by the American people through the U.S. Agency for International Development (USAID) under Cooperative Agreement No. AID-OAA-A-11-00031, the Strengthening Partnerships, Results, and Innovations in Nutrition Globally (SPRING) project.

