

WORLD VISION SOUTH SUDAN HUNGER RESPONSE SITUATION REPORT NO. 9

23 AUGUST 2017

World Vision

SITUATION HIGHLIGHTS



KEY MESSAGES

- **Centrality of protection:** Food insecurity is rising because of South Sudan's protection crisis. Trends show that food insecurity rises wherever significant and/or prolonged conflict occurs in the country. Over the past weeks, intra ethnic conflict has intensified in locations that were less prone to conflict in the past. These areas do not have the capacity to cope with new shocks and stresses. Children are the most vulnerable to the many harmful effects of conflict. In South Sudan, evidence of this conflict is often seen in child hunger and malnutrition.
- **Displacement:** Currently there are roughly 1.9 million people internally displaced within South Sudan, and roughly 2 million seeking refuge in neighbouring countries. This number is likely to rise if conflict in the eastern part of the Greater Upper Nile region continues to push civilians into Ethiopia. World Vision asks all stakeholders to work together more than ever before to facilitate peace and security throughout the country and to allow urgent and unimpeded access to humanitarian and development actors in the country. While humanitarians will continue to do all that is possible to alleviate suffering and save lives, until fighting stops, the humanitarian situation will continue to deteriorate.
- **Country wide food insecurity rising:** While famine is no longer declared in South Sudan, the overall food security crisis experienced across the country continues to deteriorate largely due to conflict across the country. The number of people experiencing "severe" food insecurity country-wide continues to rapidly increase and reached a record 6.0 million (50% of the population) in July. However, this number is likely rising as conflict and insecurity continue. Activities carried out to prevent a further deterioration of the food security situation must be scaled up to meet the increased needs. Funding is urgently needed, particularly to prevent the reemergence of famine, particularly in areas where the previous famine occurred and at risk areas. The speed at which this is done is paramount considering operations during the rainy season are significantly more costly and challenging.
- **Cholera** cases reported over the past three weeks are generally declining. Still, there were active transmissions in 10 counties: Kapoeta South, Kapoeta East, Kapoeta North, Tonj East, Yirol East, Yirol West, Nyirol, Ayod, Duk and Juba.



7.5M

people in need of humanitarian assistance

6M

people are severely food insecure



\$35.5M

required for humanitarian assistance



840,000

children under-5 are acutely malnourished



270,000

children are severely malnourished



3.9M

people displaced

*All financial figures in US dollars

HUMANITARIAN SITUATION OVERVIEW

Country Wide Updates

- **Humanitarian food commodities looted in multiple locations:** A UN agency experienced six looting incidents perpetrated by armed groups and civilians in Upper Nile, Rumbek North, Kapoeta East, Tonj East and Gogrial East. More than 629 metric tons of food items intended for people in need were looted.
- **Access remains a predominant concern for humanitarians:** A recent survey notes that Bureaucratic Access Impediments (BAI) are delaying and increasing

the cost of humanitarian assistance; a significant number of BAI were accompanied by violence; armed actors had the most negative impact on humanitarian activities; less than half of BAI cases were resolved with a positive outcome; and most BAI were not reported and, when they were, they were reported more consistently to humanitarian organizations' own headquarters. President Kiir has publicly committed to remove obstacles, including minimizing transaction costs for humanitarian workers and urgently called for these to be translated into concrete and tangible improvements.

WHAT WORLD VISION IS DOING



FOOD SECURITY AND LIVELIHOODS

- **Food assistance:** 408,675 people received food assistance through general food distribution, rapid response, blanket and targeted supplementary feeding, food for education, girls' incentives and food for assets projects.
- **Food security and livelihood supplies:** 2,405 farmers received crop seed kits. 1,660 fisher folks received fishing kits. 700 families received watering cans.
- **Resilience skills:** 1,000 farmers attended trainings to improve their harvests, market their produce and make nutritious meals from garden vegetables for their children. 105 people learned fishing skills during trainings.
- **Environmental conservation:** 576 families learned to make and use fuel-efficient cooking stoves.
- **Cash programming:** 91 million SSP (US \$779,158) was distributed to 104,487 people through conditional cash programming, cash for assets and value vouchers.



HEALTH AND NUTRITION

- **Screening, care and treatment:** 23,893 children were screened for malnutrition, with 1,944 malnourished children identified and admitted into care and treatment. Furthermore, 10,738 pregnant and lactating women were screened for malnutrition. 2,913 identified as malnourished were admitted into care and treatment.
- **Health care:** 13,676 children under age 5 and over 1,601 adults attended curative consultations from World Vision supported health facilities.
- **Antenatal care:** 527 mothers received assistance through World Vision supported antenatal clinics.
- **Supplementary feeding:** 101,077 children and women received food assistance through supplementary feeding support across World Vision supported centres.
- **Behavioral change messages:** 9,229 people participated in health and nutrition education sessions where they learned appropriate infant and young children feeding practices, health and hygiene practices and other health seeking behaviours.

- **Health Supplies:** Three World Vision supported health facilities in Tonj North received 300 Long Lasting Insecticide Nets which were distributed to pregnant women.



EDUCATION AND PROTECTION

- **Access to education:** 16,836 children attended World Vision supported early childhood development centres, primary and secondary schools.
- **School feeding programmes:** 17,886 children received 102.4 metric tons of food supplied under school meals and Girls Initiative assistance targeted to promote school attendance, retention and completion.
- **Child friendly spaces:** 8,700 children attended child friendly spaces where they accessed education and protection services.
- **Gender behavioural change:** 1,115 people learned about sexual and gender based violence, prevention, referral mechanisms and child rights through awareness campaigns conducted in Juba.
- **School supplies:** All five World Vision supported primary schools in Juba attended by about 1,620 children received text books.
- **Advocacy:** 617 people attended campaigns sessions to promote education enrolment, retention and completion
- **Birth registration:** 325 children supported to acquire birth registration certificates.



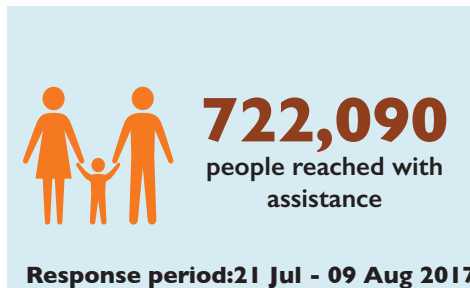
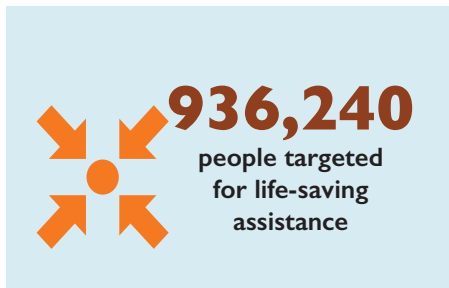
WASH

- **Potable water:** Over 106,226 people received 1.59 million litres of clean water daily in World Vision supported areas of Dengtoma, Kor Adar, Malek, Malakal Town, Aburoc, Manyo, Melut town and Renk town.
- **Behavioural change messages:** 4,910 people learned about food safety and handling, appropriate waste disposal, safe water chains, appropriate latrine use, personal hygiene, cleaning of utensils and appropriate hand washing through hygiene promotion messaging.

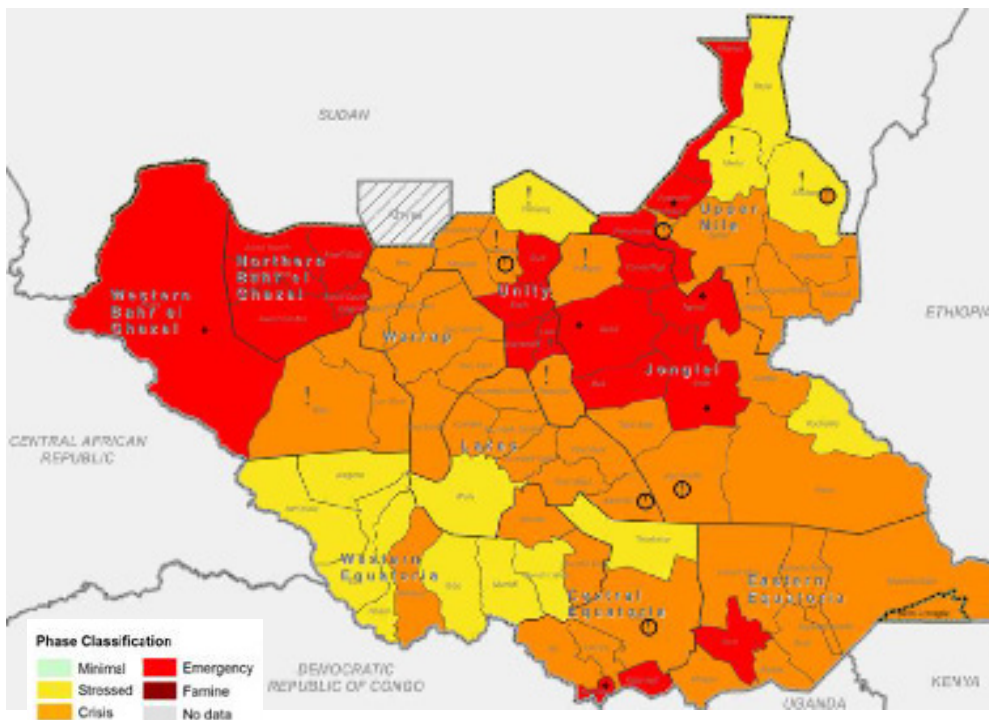
NEEDS

- Inadequate access to clean and safe water supply in famine affected communities,
- Ongoing cholera outbreak in many locations affecting the community requires scaling up of WASH interventions.
- Limited access to nutrition and health services in Internally Displaced Persons and famine affected communities.
- Agricultural inputs for the main rain season.

RESPONSE HIGHLIGHTS 21 July-09 Aug 2017



FOOD INSECURITY IN SOUTH SUDAN



GAP AND FUNDING REQUIREMENTS



519,787
people reached with food
security and
livelihood support

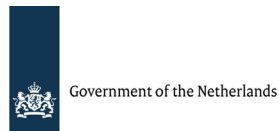
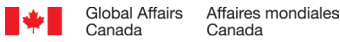
111,136
people reached with water,
sanitation and hygiene
support

49,239
people reached with
nutrition support

14,409
people reached with health
assistance

42,970
children reached with child
protection and education
interventions

WV SOUTH SUDAN HUMANITARIAN DONORS AND PARTNERS:



PRIMARY CONTACT INFORMATION

Lilian Mumbi Kamonjo

Response Manager

E-mail: lilian_mumbi@wvi.org

Skype: l.mumbi

Martin Omoro

QA Coordinator Juba

E-mail: Martin_omoro@wvi.org

Skype: martinomoro