



© World Vision Photo



FACT SHEET

RESILIENCE IN WEST AFRICA & THE SAHEL

Overview

World Vision is a leading humanitarian and development organisation with a proven track record in strengthening the adaptive, absorptive, and transformative capacities of vulnerable communities. With extensive experience and presence in nearly 100 countries, World Vision is well-equipped to work towards ensuring resilience in any context while taking into consideration unique social, economic, and environmental situations. Our food security and livelihoods programming focuses on multi-sectoral, integrated approaches to enhancing the resilience of vulnerable populations.

World Vision's Role

World Vision has developed a Multi-Sectoral Resilience Framework that guides our resilience strategy and is backed by formative research and substantial experience in resilience programming. In 2022, World Vision conducted a Resilience Systems Analysis (RSA) in Burkina Faso, Chad, Mali and Niger, with an additional RSA in Mauritania completed in March 2024. The purpose of these RSAs was to get stakeholders in these countries to reassess the risk landscape and the impacts; arrive at a shared vision of the risks; understand how those risks and stressors affect society's livelihood systems; how those systems are set up to cope with risks; and whether they make them resilient.

Our Approach

Building Secure Livelihoods (BSL) to support marginally poor' households to improve their agricultural production and make a profitable farming venture to increase family income in a sustainable manner.

Ultra Poor Graduation to provide extremely poor households with a pathway out of poverty by helping families engage in a productive and resilient livelihood.

Savings for Transformation (S4T) to facilitate access to credit for vulnerable communities, mostly women.

Community Disaster Risk Reduction Management (CDRRM) to actively engage communities to reduce their vulnerabilities and enhance capacities to cope with shocks and stressors.

Farmer Managed Natural Regeneration (FMNR) to combat poverty and hunger amongst poor subsistence farmers through a low-cost land restoration technique that increases food and timber production and resilience to climate extremes.

Local Value Chain Development (TTC) to organise smallholder family farmers into groups that collectively analyse and access markets to sustainably improve their families' economic well-being.

Empowered World View (EWW) to leverage gifts, talents, knowledge, resources and capacities (spiritual, social, physical and economic) to drive social change for sustainable well-being.

In 2023, we reached...



1,424,636 People



749,846 Children



674,790 Adults

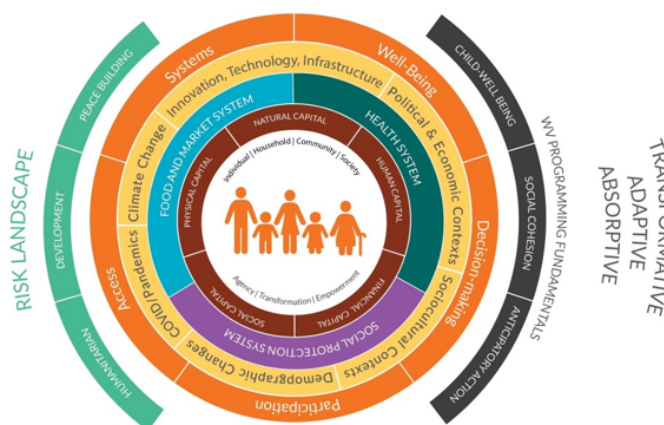


Global Resilience Experience

World Vision's Multi-Sectoral Resilience Framework guides the organisation's overall resilience strategy and approach. The approach recognises that resilience building must be context and problem-driven instead of merely sector specific. The goal of the approach is meant to build the adaptive, absorptive and transformative capacities of individuals, households, communities, and systems. World Vision implements resilience building projects in more than 50 countries in development, humanitarian and peace contexts. These projects are funded by donors including USAID, European Union, WFP, UNHCR, UNICEF, UNDP, private foundations and others.

World Vision

Tulane University



- GESI DOMAINS
- TYPES OF CAPITAL FOR RESILIENCE
- SYSTEMS DRIVERS
- ■ KEY SYSTEMS

Focus Country Spotlights

Burkina Faso

World Vision Burkina Faso (WVBF) was established in 2021. Current programs in Burkina Faso span five regions, including Boucle du Mouhoun, Nord, Sahel, Centre, and Centre-Nord, which cover 16 communes. Since 2021, WVBF has implemented several different resilience projects supporting 77,070 beneficiaries with more than \$500k of awards. Currently, WVBF supports the following resilience projects:

- WAHER/Tilegré: A Multisectoral Assistance Project for displaced populations in the Centre-North, Sahel and Boucle du Mouhoun regions.
- VISSER RELIEF FUND (VRF) 3: Focused on scaling up humanitarian assistance and protection for conflict affected children and communities in Northern and Sahel regions of Burkina Faso.
- INNOVATION CHALLENGE: Designed to scale up the resilience and adaptive capacities of women, children and people living with disabilities (PLWD) to the effects of climate change on water resources.



Program Impacts

- Food Security and Livelihoods: 7,000 people have received cash for food assistance, 500 households received food vouchers and 153 youth trained in trades for income generation.
- Water, Sanitation and Hygiene: 36 boreholes drilled, providing access to clean water for 19,476 people.
- Health and Nutrition: 12,696 children ages 6 to 23 months received nutritional assistance through the distribution of small quantities of Lipid Nutrient Supplement (LNS), while 32,143 women and 1,007 men learned proper IYCF practices.
- Women and Youth Empowerment: Support of 40 women and youth run cooperatives and 3,000 individual entrepreneurial ventures

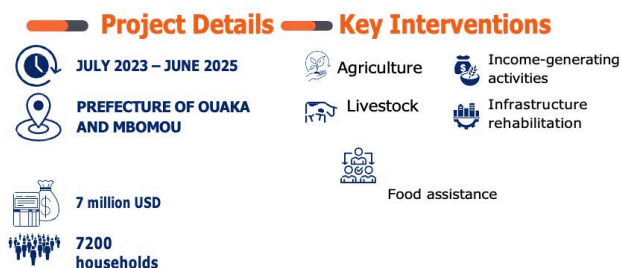
Donors & Key Partnerships

Programs are funded by the Global Alliance for Vaccines and Immunization, Aktion Deutschland Hilft, Dutch Relief Alliance, World Food Program (WFP), U.N. Population Fund, U.N. High Commissioner for Refugees (UNHCR), Visser Response Fund, and World Vision donors.

Partnerships with CBOs: CREDO, OCED, ASSOCIATION LYDIE, Children Believe, OCADES Ouagadougou, ANADI, AJES, ADC -DPE, AFEBAD, DIGNUS Assoc., OCADES Dedougou, Union Fraternelle des Crovants (UFS) de Dori. Convention with Government: Establishment agreement, Ministry of Health and Public Hygiene, Ministry of Solidarity, Humanitarian Action, National Reconciliation, Gender and Family, Ministry of Water.

Central African Republic

The USAID-funded Livelihood and Community Asset Strengthening Project for Conflict-Affected Communities in the Central African Republic aims to strengthen livelihoods and community assets for conflict-affected communities in the Central African Republic. The project focus on resilience activities related to agriculture and livestock, access to functioning savings and credit systems, and community rehabilitation. Agriculture and livestock are essential pillars of household economic development and food security. In addition, income-generating activities are provided to facilitate economic recovery among targeted households.



Program Impacts

- 2,894 farmers have been trained on the technical itinerary of market gardening and food crops.
- 480 farmers received vegetable seeds and ploughing tools.
- 24 community animal health workers identified and trained.
- 480 farmers have been trained on different goat and pig farming techniques.
- Together with the Ministry of Livestock and other partners, we have launched the animal vaccination campaign.
- 100 young people identified and will soon start vocational training in different sectors
- 880 households received 31,680,000 CFA francs for food assistance.
- 150 households received 5,625,000 FCFA after rehabilitating 12km of road for 15 days in Bambari.
- The road rehabilitation sites were supplied with equipment for the rehabilitation works.
- 12 village agents were identified and trained on the "Saving for Transformation" approach.
- 120 savings and loan groups identified and in the process of being formed.

Chad

World Vision Chad (WVC) has been operational since 1984 and currently works in 13 of 23 provinces including Salamat, Moyen Chari, Mandoul, Logone Oriental, Logone Occidental, Tandjilile, Mayo Kebbi East, Mayo Kebbi Ouest, Chari Bagruimi, Lake Ouaddai, Wadi Fira, and Sila provinces. World Vision's work in Chad focuses on food security, resilience, livelihoods, WASH, education, child protection, emergency response, and maternal, newborn and child health (MNCH).

World Vision Chad currently implements 12 ongoing resilience programs reaching more than 240,000 direct beneficiaries. WVC has significant experience in agriculture, livelihoods development, financial services and resilience building in fragile contexts. Currently, WVC supports several resilience building projects including:

- Food Security for Vulnerable Populations in Logone Occidental (SAN): A program that seeks to accompany vulnerable rural populations to sustainably improve their food and nutrition security.
- Community Resilience Through Surface Water Collection: a program focused on improving infrastructure, developing value chains and increasing economic opportunities for communities in Farchana Province of Ouaddai.
- Strengthening Food Self-Sufficiency, Socio-Economic Development and Peaceful Cohabitation of Host and Refugee
- Communities in Host Camps and Villages: a program designed to support refugee and host communities to increase agricultural production, improve the storage of agricultural harvests, and improve economic skills through training in business development.

World Vision Chad Operational Areas



Program Impacts

- Food Security and Livelihoods: Between 2017 and 2022, W established 701 savings groups which consisted of 17,525 members with an average annual savings for all groups totaling \$1,066,877.
- Water, Sanitation and Hygiene: In 2022, WV provided 21,60 people with access to clean water and 218,688 individuals with access to safe sanitation facilities and basic hygiene services.
- Health and Nutrition: 474 community volunteers were trained in Positive Deviance Hearth (PD.H) while 8,780 children screened and cared for in nutritional recovery centers recovered from acute malnutrition. Moreover, 18,770 malnourished children who were given nutritional supplements recovered from acute malnutrition.

Donors & Key Partnerships

World Vision Chad receive funding from multilateral and bilateral donors such as USAID/BHA, WFP, UNICEF, UNHCR, UNDP, OCHA, GAVI, Global Fund, European Union, Gates Foundation, and other private donors.

Partnerships: Government of Chad, Ministry of Economic Planning and Development, Ministry of Public Health and Prevention, Ministry of Water and Environment, Ministry of Agriculture, Various International NGOs, Local NGOs: ADESOH, ACHUDE, IHDL, and more than 50 Community Based Organizations and Women's Associations.

Mali

Among primary objectives under World Vision's resilience work in the humanitarian sector is to contribute to strengthening the livelihoods and adaptive capacity of targeted communities through the rehabilitation and/or creation of community assets in the Sio commune, Mopti circle. Resilience efforts have significantly contributed in multiple areas, including:

- Over 1,000 participants received agricultural materials, enrolled children in school, and covered medical expenses after participating in cash-for-work activities.
- 156 tons of shallots produced on vegetable plots: 60 tons in Soufouroulaye, 50 tons in Orgnon, and 46 tons in Segue.
- 80 women farmers received livestock and poultry: 20 women per village split into two groups of 10. Each group received either 3 hens and 1 rooster or 1 ram and 2 ewes.
- Enhanced nutritional status through training nearly 800 pregnant and lactating women on measuring children's mid-upper arm circumference and preparing local dishes via cooking demonstrations.
- Full utilisation of vegetable plots in all villages except Youre due to water shortages. December harvests were especially beneficial, with one Soufouroulaye farmer earning 60,000 CFA after selling 150 kg of shallots.
- Small group work improved social cohesion and conflict management.
- Training on group association life (OHADA model) fostered experience sharing and improved community living.
- Follow-ups, supervision, and technical capacity building boosted incomes for nearly 1,500 individuals in vegetable farming, poultry, and small ruminant rearing.
- Recovery of over 30 hectares of denuded land this year.

Program Impacts

Economic Development

- 29,989 members, including 28,160 women and 1,829 men.
- 81,360 children, including 42,637 girls and 38,725 boys, impacted by economic activities.
- 1,256 Savings for Transformation (S4T) groups formed.
 - Over 657 million CFA mobilised.
 - Over 353 million CFA disbursed as credit.
 - Over 268 million CFA in cash savings.
- Equipment provided to 801 women to support income-generating activities, including:
 - 12 podiums, 600 chairs, 2 electric soap production machines, 4 soap production tables, 10 cooking pots, 3 Katakatani motorcycles, 20 graduated pots, 28 plastic basins, 60 gloves, 20 aprons, and 24 plastic buckets.

Livelihoods

- 11,500 children, including 5,865 girls, positively impacted through the nutritional benefits of local produce from equipped sites.
 - 37 sites equipped with hybrid seeds.
 - 37 vegetable gardening sites established, covering 50 hectares to support rural women.
- 3,700 women and 112 men trained in phytosanitary techniques, plot division, and bed preparation.

Assisted Natural Regeneration (ANR)

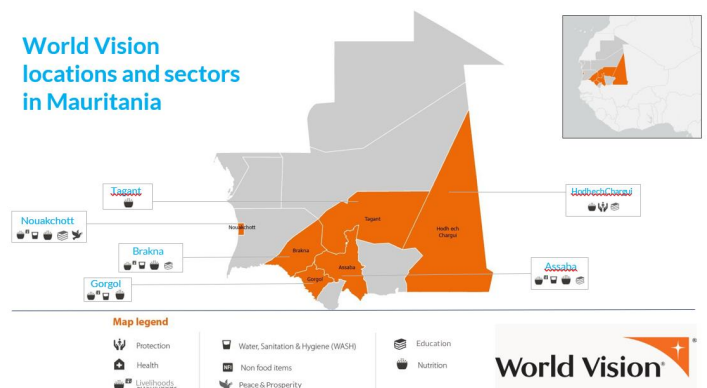
- 24,000 stakeholders sensitized on existing laws through radio programs and workshops.
- 20,000 farmers sensitized and trained on best practices in harvest management.
- 812 beneficiaries, including 490 women, trained in climate-smart agriculture (ANR, water and soil conservation, and conservation agriculture).
- Exchange visits organized for 480 agricultural producers to exemplary agroecological sites.
- 160 environmental protection brigades formed and trained.
- 439 women participated in various training series at villages or hamlets.

Mauritania

World Vision Mauritania (WVM) began operations in 1983 and has since become one of the country's largest humanitarian and development organisations. WVM works in six wilayas (regions)—including Assaba, Brakna, Hodh ech Charghi, Gorgol and Nouakchott—and 10 moughataas (departments). By 2025, World Vision aims to impact 1,397,917 of the most vulnerable children in Mauritania, improving their nutrition status and literacy skills, as well as creating a nurturing and safe environment for them at home and in their communities. WVM currently implements a \$3.4M resilience program called NOURISH which support 29,000 households to gain improved and sustainable livelihoods, particularly for female headed households through nutrition-sensitive, climate smart approaches.

Program Impacts

- **Food Security and Livelihoods:** In 2023, WV provided 472,275 individuals experiencing acute food and nutritional insecurity during the lean season with unconditional cash transfers. Moreover, World Vision established 894 savings and loan groups with 17,161 participants, 98% of whom are women.
- **Water, Sanitation and Hygiene:** WV has constructed 619 drinking water supply systems and drilled or rehabilitated 302 wells, while 832 latrines have been constructed in schools and health centers. Through these water and sanitation infrastructure development activities, 114,968 individuals now have access to safe drinking water and sanitation facilities. Moreover, 784,236 people have been trained on improved hygiene and sanitation practices.
- **Health and Nutrition:** As a result of Timed and Targeted Counseling (ttc) activities, 2,758 pregnant women received prenatal consultations in the nearest health facilities, and 1,552 women gave birth in health facilities. Moreover, 37,871 children under five were screened for malnutrition and 7,789 mothers/ caretakers were trained in early detection for malnutrition.



Donors & Key Partnerships

WVM receives project funding from USAID, US DOS, European Union, Irish Aid, UNICEF, private donors (foundations, agencies and associations)

Government Partners: Ministry of Rural Development, Ministry of Environment and Development, Ministry of Economic Affairs.



© World Vision Photo

Our Commitment

Driven by a desire to serve God and make a lasting impact in the world, World Vision is a leading global partner in transforming the lives of vulnerable children, within their families and communities, so they can become all that God created them to be. For the past 43 years, World Vision has been serving communities across West and Central Africa in contexts where the most vulnerable children struggle to survive.

As part of a global community dedicated to changing the lives of children, we support children and communities through relief, development, and advocacy approaches. Guided by the principles of transformational development, we partner with churches, faith communities, governments, businesses, community-based organisations, and other non-governmental organisations to allow this work to happen.

LEARN MORE:
VISIT

www.wvi.org/africa

World Vision 