



Annual Report

October 2023 - September 2024

Background

World Vision Eswatini (WVE) is a Christian relief, development, and advocacy organisation dedicated to working with children, families and communities to overcome poverty and injustice. World Vision started operating in Eswatini in 1992 as an emergency relief organisation, before transitioning to transformational development and advocacy for the most vulnerable children, people and communities.

WVE supports broader governmental initiatives targeted at addressing development challenges that impose negative effects on the wellbeing of children, particularly where the most vulnerable children are impacted.

The organisation works with existing government and community structures to ensure sustainability. WVE also works very closely with the communities served, including children, parents and caregivers, partners, faith leaders, government departments, parastatals, international agencies, and the civil society. The active participation of children in the design, delivery and review of programmes is highly emphasised.

Our Vision

Our vision for every child, life in all its fullness.
Our prayer for every heart, the will to make it so.

Our Mission Statement

World Vision is an international partnership of Christians whose mission is to follow our Lord and Saviour Jesus Christ in working with the poor and oppressed to promote human transformation, seek justice, and bear witness to the good news of the Kingdom of God.

Our Values

We are Christian
We are committed to the poor
We value people
We are stewards
We are partners
We are responsive



Background

Vision

Mission Statement

Values



Ms. Siceliwe Mngometulu Chairperson | Board of Directors

As World Vision Eswatini (WVE)'s Board Chairperson, it gives me great pleasure to deliver this annual report for the financial year 2024. It has been a year filled with great achievements in our quest to transform the lives of vulnerable children in Eswatini, as per our five-year (2020-2025) Strategy, which seeks to reach 406 000 children, their families and communities.

During this reporting period, the organisation continued to implement strategic advocacy initiatives to improve the wellbeing of the most vulnerable children, mobilise funding, ensure operational efficiency and promote people learning and growth. Through its operations in 29 constituencies, WVE reached over 180,843 direct beneficiaries, comprising of 149,256 children, 582 Community Healthcare Workers, 22,960 adolescents, and 31,120 caregivers.

These are not just numbers reached, but lives transformed at a 90% overall performance rate, through the organisation's various technical programmes. These exciting achievements were also evident during our annual community visits and conversations with children, where we witnessed the transformation firsthand. This year we visited projects under the Mkhiweni Inkhundla and those in the Lubombo Region, supported by the Esicojeni Foundation. It was truly a humbling and insightful experience, especially for our new Board members.

Considering that these achievements came in the midst of various challenges, including a funding decline as a result of the global economic crisis, I would like to applaud the National Director, the Senior Leadership Team, Management and Staff of the organisation for their passion, dedication, and hard work, evidenced by another positive year-end. I am also happy to report that even this year, the organisation was awarded a clean financial audit by auditors Sizwe Ntsaluba Grant Thornton. As the Board, we are pleased to note that resources entrusted to WVE by donors are appropriately channeled towards improving the lives of those we serve.

Last, but certainly not least, I wish to extend my profound appreciation to the WVE Board of Directors for the strategic direction, guidance and oversight provided to the team, including in the procurement of a new national office in Mbabane. As a Board, we welcome with appreciation new members Pastor Sibusiso Nhleko, Mr. Nqaba Sicelo Dlamini, and Ms. Nosimilo Simelane, who quickly and ably filled the gap left by those who transitioned, as reported in the previous reporting period. We truly appreciate the new minds and insights!

In closing, let me wish all at WVE another blessed and fruitful year in FY25. I trust you are all more than capable of achieving even greater results in the new financial year. Stay blessed!

A handwritten signature in black ink, appearing to read 'S. Mngometulu', written over a horizontal dashed line.

Chairperson of the Board of Directors
Siceliwe Mngometulu

Our Board of Directors



Ms. Siceliwe Mngometulu
Chairperson



Ms. Sharon Maziya
Vice Chairperson, Chairperson,
National Resource
Development Committee



Dr. Thokozani Nkambule
Chairperson, Audit & Risk
Committee



Ms. Nelisiwe DeSousa
Chairperson, Governance &
Nomination Committee



Ps. Sibusiso Nhleko
Member



Dr. Fortunate Shabalala
Member



Mr. Nqaba Sicelo Dlamini
Member



Ms. Nosimilo Simelane
Member



Mr. Mark Kelly
Regional Leader & WV
International Representative



Ms. Tinah Mukunda
National Director

Our Senior Leadership Team



Ms. Tinah Mukunda
National Director



Ms. Sakhile Dlamini
Interim Operations Director



Ms. Happiness Mkhathshwa
Integrated Health Programmes Director



Mr. Humble Nxumalo
Programme Development, Evidence &
Impact (PDEI) Lead



Ms. Faith Ngwenya
Associate Director, People & Culture



Mr. Thandwa Lushaba
Associate Director, Finance & Support
Services

National Director's Foreword



Ms. Tinah Mukunda National Director

I am truly proud of the effort made by the World Vision Eswatini (WVE) team in ensuring that the organisation achieves an overall performance of 90% on key performance indicators in this reporting period (October 2023 – September 2024).

Global changes, influenced by escalating conflicts, costs, climate change, and the lingering COVID-19 impact, have certainly changed the operating landscape for donor-funded organisations, thus calling for strategic re-positioning programme delivery. Despite all this, I am impressed by the positive dedication and passion shown by the WVE staff in ensuring timely, on-budget and on-target delivery. We continue to critically monitor the operating environment and intentionally tell our story of impact on the communities we serve. We also engage in conversations aimed at enhancing sustainability of our transformative development initiatives for the children of Eswatini, their families and communities on an ongoing basis.

Historically we have implemented programmes in rural communities; however, we have expanded into urban areas, as part of our urban programming approach. From this, we are learning and discovering different vulnerabilities faced by these communities, as demonstrated in national data. For us, this indicates a need to further explore how we can serve urban populations in order to address the growing vulnerability, including poverty, violence against women and children, negative effects of climate change, and poor sanitation and hygiene. Additionally, as part of our interventions, we continue to incorporate Climate Change; Gender Equity, Disability, and Social Inclusion (GEDSI) in our technical programmes as key priority areas.

All the achievements made in this FY have been made possible, first and foremost, by God Almighty, who continues to enable us to serve His people. We are also profoundly grateful to our donors (both internationally and locally), the Government of Eswatini, and supporters for the confidence shown in the organisation. We remain committed to diligently serving the children of Eswatini, their families, and communities.

My sincere gratitude goes to the WVE Board of Directors and the WV International leadership for their continued guidance and support, even when we set in motion ambitious goals and operations in efforts to strategically position the organisation for sustainability. I would also like to appreciate the Senior Leadership Team, Management, and all WVE Staff for their support and remarkable commitment to ensuring the organisation achieves its goals. With this kind of commitment and support, the organisation's mandate for every child in Eswatini to enjoy life in all its fullness will certainly be achieved. This I truly believe!

Find out more in this FY24 Annual Report.

Performance Overview

In FY24, the organisation implemented its programmes in 29 of the 57 constituencies in the country. These include 15 Area Programmes (APs) and 14 constituencies with grant-funded projects only. In the current reporting period, WVE reached over 339,058 individuals (directly or indirectly) through its programmes: 180,843 were direct beneficiaries of WVE programme interventions, including 149,256 children, 582 Community Healthcare Workers, 22,960 adolescents, and 31,120 caregivers.

Cumulatively, 390,843 direct beneficiaries (i.e. 96% of five-year strategy target) have been reached through WVE interventions since 2020, receiving a variety of interventions defined under the Water, Sanitation and Hygiene (WASH); Livelihoods; Health, HIV, and Nutrition; and Community Engagement and Sponsorship Plan (CESP) technical programmes (TPs). The CESP TP incorporates Child Protection and Participation, Safeguarding, and Faith and Development programmes.

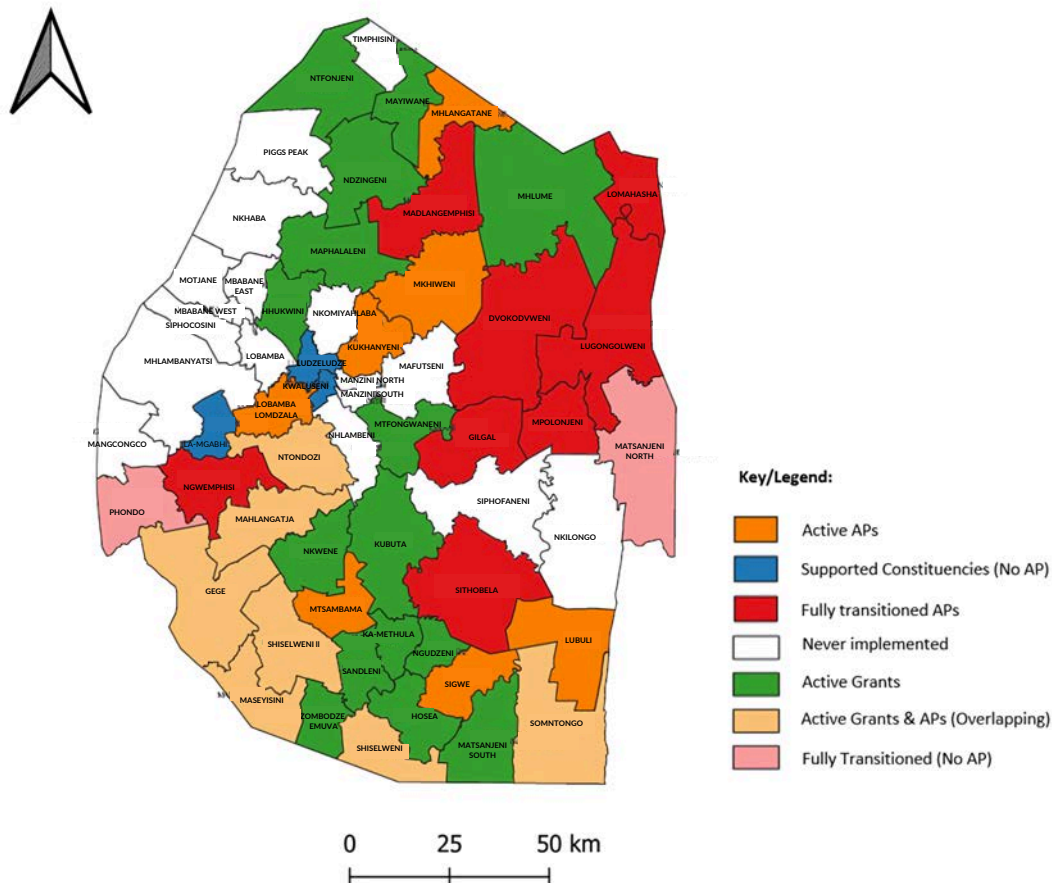
WVE programmes ended FY24 with an achievement of 90% overall performance to set targets, having varying results recorded across grants and technical programmes under different APs and Clusters.

Transitioning Area Programmes

WVE successfully coordinated the transitioning and handover of three (3) Area Programmes (APs) in FY24, namely Lubuluni, Shewula and Mkhiweni APs. These are all APs whose lifespan of 15 and more years had ended.

New Office Building

The organisation procured a new national office, which was officially opened on the 1st October 2024. Full office occupancy is set for the second quarter of FY25.



OUR PROMISE



To advance the objectives of our strategy, The Promise, WVE continued to implement interventions focusing on our technical programmes in Livelihoods; Water, Sanitation and Hygiene (WASH); Health, HIV and Nutrition; as well as Community Engagement and Sponsorship Plan (CESP), which incorporates Child Protection and Participation, Safeguarding, as well as Faith and Development. FY24 implementation progress on key performance indicators aligned to each of these technical programmes.



Livelihoods Technical Programme



Goal: To break the cycle of poverty for the most vulnerable households by strengthening families' capacity to provide well for 109,000 children by 2025.

Through the Livelihoods TP, WVE ensures that children aged 12-18 years report an increased level of wellbeing, including improved asset and life skills, demonstrated transformed attitudes, practices and behaviours amongst adolescents and adults.

A summary of key FY24 interventions and results of outcome monitoring indicates the following:



SZL 33,278,520

value of savings by established Savings Groups



4,201

who received Business Startup Aid



624

supported with Vocational Skills Training



5,240

trained on climate-smart agriculture techniques



24,211

of saving groups membership



7,675

trained on financial literacy education



Households with alternative and risk diversified sources of income increased from **37% to 58%**



Households who faced a disaster and now live at same level or better than before increased from a baseline of **51% to 76%**



Households where one or more adults are earning a regular income increased from a baseline of **41% to 49%**





Livelihoods

Two goats light the way to a brighter future



Letinhle (16) holding one of her kids produced by one of the goats received from World Vision Eswatini through a livelihoods Project funded by Eswatini Electricity Company.

Without the presence of a father and raised by an unemployed mother, Letinhle's family of eight struggled daily. Living under the Ngwavuma Area Programme, their primary source of food and support came from Letinhle's sister, who works as a domestic worker in Malkerns, a small town situated 32km from the country's capital city, Mbabane.

Despite these hardships, sixteen-year-old Letinhle's dream of one day becoming a science teacher was one she optimistically held on to.

This faith paid off when, in March 2024, she received two goats from World Vision Eswatini's Livelihoods Technical Programme, through an Eswatini Electricity Company (EEC)-funded Project, which aims to uplift vulnerable communities by providing sustainable resources and opportunities.

"It was like God had answered my daily prayers. I have always prayed for a breakthrough for me and my family, so when my Youth Facilitator informed me that I was getting goats, I was so happy," Letinhle explains, beaming.

The goats she received gave birth to five kids. Although one tragically passed away, the remaining four have been growing well. She dreams of expanding her goat-rearing activities into a commercial venture, which would significantly improve her family's circumstances. Letinhle's aspirations extend beyond goat-rearing. She hopes that her growing goat business will provide the means to pay for her education, so she can attain her future career goal, while also helping her family meet their basic needs.

Through initiatives like the EEC Project, World Vision Eswatini continues to make meaningful strides in improving the lives of vulnerable children, reaffirming its commitment to a world where every child has the opportunity to thrive.



Water, Sanitation & Hygiene Technical Programme



Goal: To achieve universal access to safe drinking water and basic sanitation and hygiene for 137,400 people in WVE programming areas by 2025.

World Vision Eswatini plans to scale up efforts towards universal water coverage in 15 Area Programmes through an ambitious programme to invest over SZL125 million on a project estimated to cost over SZL250 million. The organisation continues to advocate for a collaborative or co-financing partnership with the Government. WASH programme performance towards set targets for FY24 is at 103%, an improvement from the overall performance of 91% reported in FY23.

WVE ensures improved access to and utilisation of sustainable safe drinking water, sanitation, and hygiene in communities, including education and health facilities.



30,381

People gaining access to basic sanitation



47,647

People gaining access to hygiene facilities



2,512

Sanitation facilities completed in communities



21,016

People gaining access to basic drinking water



1,081

Water systems constructed



13

Schools provided access to basic drinking water



Households using basic sanitation services increased from **88% in FY23 to 89% in FY24**



Households using basic drinking water services increased from **76% in FY23 to 77% in FY24**





WASH



Not just access to water, but the ability to put food on the table!



Eric watering spinach in his garden.

Eric, from Mahlangatsha Area Programme in Eswatini, is a dedicated and hardworking man who has experienced a life-changing transformation as a result of accessing water closer to his home.

Through its commitment to ensuring food security, World Vision Eswatini implemented a range of initiatives aimed at making sure communities have enough food, one of which is bringing safe water closer to those in need.

For years, Eric (49) and his family of five struggled with food insecurity, worsened by the lack of accessible water. The nearest water source was a tiring 30 to 45-minute walk away, consuming valuable time and energy each day. This left little room for cultivating a sustainable food source, making it difficult for Eric to provide enough food for his family.

Recognising the critical need in the area, World Vision Eswatini, through its Water, Sanitation, and Hygiene (WASH) Technical Programme, installed a sustainable water system in Eric's area. This initiative brought clean water just 10 minutes from his home, a significant reduction in travel time, opening up new possibilities for him and his community. The Mambatfweni Water System provides water to about 900 people, including children.

With water readily accessible, Eric seized the opportunity to start a nutrition garden at home. He planted cabbages, spinach, lettuce, beetroot, and onions, transforming a once barren plot of land into a thriving source of nutrition.

“Accessing water easily has also improved the sanitation at home and my children no longer have disease outbreaks caused by drinking dirty water,” Eric explained.

World Vision’s efforts go beyond just providing water; they are part of a broader mission to ensure that every child has enough food to lead a healthy and productive life by addressing the root causes of hunger and poverty.



Health, HIV and Nutrition Technical Programme



Goal: To contribute towards the elimination of new infections, improved health and nutritional status of 122,000 vulnerable children (0-18 years) and women of child-bearing age by 2025.

World Vision implements targeted interventions aimed at increasing the number of children protected from infection and disease. The interventions also aim to ensure that children and women with children aged 0-6 years access and utilise maternal and child health services, including nutrition services.

The organisation further targets adolescent girls and young women (AGYW), adolescent boys and young men (ABYM), and caregivers with interventions to prevent the spread and incidence of HIV. This includes providing care and support to people living with HIV (PLHIV), including sensitising them on HIV testing and adherence, as well as supporting community-level follow-ups for defaulters (i.e. children and adolescents living with HIV), those on treatment and other most at-risk populations.



20,023

Children (0-59 months) accessed growth monitoring services



5,456

Supported to access HTS from community



1,733

Enrolled and provided adherence support C/ALHIV



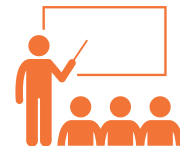
22,260

AGYW received HIV prevention education



6,134

Caregivers provided with maternal & child health support



547

Community Health Workers/Volunteers trained



Skilled birth attendance remained at **91%**



Youth knowledge of HIV and AIDS increased from **49% in FY23 to 69% in FY24**



Becoming less dependent to be HIV resilient



Members of the Springboks during one of their meetings.

Under the Maphalaleni constituency, a group of 13 young women's lives changed dramatically, thanks to the "Halting The Spread Of HIV/AIDS And Reversing Its Impact In The Swazi Society" Project. As part of the intervention, implemented by World Vision Eswatini with funding from the Coordinating Assembly of NGOs (CANGO), the group, named "Springboks" participated in "WORTH" sessions that taught them the importance of saving money.

Working together, the Springboks started saving diligently. Over time, their hard work paid off as they managed to save over E8,000 (approx. \$434). This collective effort and newfound financial freedom also built their resilience to HIV.

Among these Springboks, two girls pursued their entrepreneurial goals by using their savings to start their own businesses. One of them, Nomfundo (24), started a poultry farming business, making a profit of E1,600 (about \$86) every month. Her business helps her ensure that her grandmother and younger sister living with a disability, as well as her son have enough basic needs.

"WORTH taught me that I need to be financially independent as a young woman. I chose poultry farming because it did not require much capital, yet it profits enough money for my basic needs," she said.

Ncobile, also 24, started an MTN mobile money service business. By offering convenient money transfer services, she makes a significant impact on the local economy and earns a stable income for herself, attaining profits over E1,000 (around \$54) per month. Both businesses are thriving, allowing these young entrepreneurs to provide for their children's basic needs. With their earnings, they can afford better food, healthcare, and education, ensuring that their children have a brighter future.



Community Engagement and Sponsorship Plan (CESP) Technical Programme



Goal: To improve the socio-legal status of 406 000 children through effective protection, participation, advocacy and spiritual nurturing of children by 2025.

World Vision Eswatini, through the CESP Technical Programme, seeks to increase the awareness of God's love amongst children and further ensure that families live safe and enjoy life in all its fullness amongst peers, parents/caregivers, and the community at large.



36,933

adults/caregivers participated and were sensitised on Child protection



5,275

supported with acquisition of birth certificates



908

cases of violence against children identified and responded to



56,489

children & adolescents participated in activities towards ending violence



123,958

children participated in Spiritual Nurture activities



1,252

GBV cases identified and responded to



Adolescents who report having experienced any physical violence and/or psychological aggression by parent/caregiver in the past 12 months decreased from **17% in FY23 to 12% in FY24**



Boys and girls (12-18 years) who report experiencing God's love decreased from **87% in FY23 to 62% in FY24**



Children and adults who express hope for the future decreased from **70% in FY23 to 57% in FY24**



Adolescents who have experienced sexual violence in the past 12 months by any perpetrator decreased from **6% in FY23 to 2% in FY24**



Buhle's story of empowerment and inclusion



Buhle, in class using her special speech and Braille laptop.

Buhle, is an 18-year-old girl from the Shiselweni Region in Eswatini, who, despite facing challenges due to her visual impairment, holds on to her dreams tightly.

Her life took a remarkable turn when she became involved in a unique project implemented by World Vision Eswatini's CESP Technical Programme, with funding support from UNICEF and the European Union.

Buhle's journey began with a simple act of kindness; the provision of dignity packs. These packs contain essential items like soap, sanitary pads, and toothpaste. She also received clothing, each piece carefully chosen to fit Buhle's unique style and personality.

The transformative support also included the payment of Buhle's school fees, totalling over E6,000 (approx. \$314), including her exam fees. This alleviated a significant financial burden on her family and allowed her to focus wholeheartedly on her studies, without worrying about financial constraints.

Buhle also received a laptop equipped with a special Non-Visual Desktop Access (NVDA) software. Providing feedback via synthetic speech and Braille, it enables visually-impaired people to access computers running Windows. With NVDA, Buhle can navigate the digital landscape with ease, accessing information and learning resources with just the touch of a button. The impact of these interventions is profound! Buhle's grades improved, her confidence soared, and her dreams have grown even bigger as she hopes to help other children living with disabilities with their emotional wellbeing.

"My grades went from 60% on average to a soaring 90%. The support I received really changed my life," Buhle says, smiling.

Buhle also received special shoes, enhancing mobility, providing stability, and preventing foot-related complications.

ENOUGH Campaign



World Vision Eswatini launched the ENOUGH Campaign at The Royal Villas in Ezulwini, where key stakeholders, including representatives of the Government (Ministries and Parliament), UN agencies, civil society, and the business industry joined the organisation's leadership, staff and Board of Directors to amplify a collective voice against hunger and malnutrition. With over 243,000 people in Eswatini facing severe food insecurity during the reporting period, this campaign aims to ensure that no child or family suffers from hunger.

Prior to the launch, a consultative stakeholder engagement on the ENOUGH Campaign was conducted with various stakeholders, including 19 child representatives, whose voices were also critical in informing the Campaign design. A total of nine (9) children participated in the launch, with one of them sharing how they were seeing hunger impacting their community, particularly the inability to learn on an empty stomach.

ENOUGH Campaign Overview

Vision: Eswatini, a country where every child enjoys ENOUGH nourishing food and thrives by 2027

Strategic Goal 1

Improved **visibility** & understanding of the **size**, dynamics & specifics of child hunger & nutrition status at all levels

Strategic Goal 2

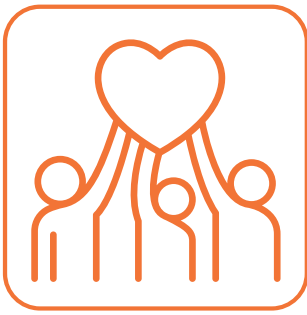
More **children** consume enough **nutritional food** provided ethically, sustainably & as locally as possible for sustainability

Strategic Goal 3

Children & families increase **access** to quality comprehensive **preventive and curative nutrition** services, including addressing **wasting**

Strategic Goal 4

More **children and especially teenage girls** remain in school with reduced risk of dropping out and **teenage pregnancy**, weakening the **cycle of intergenerational child hunger & malnutrition**



Humanitarian Emergency Affairs (HEA)



Goal: To provide on-the-ground aid and assistance to affected people through immediate emergency aid response when disaster strikes in order to protect children, save lives, reduce suffering, protect livelihoods, strengthen community resilience and promote peace.



National Disaster Management Agency's CEO Victor Mahlalela speaking during the launch of the Taiwan Rice Project.



Community members receiving rice donated to Eswatini by World Vision Taiwan.

Disaster Management:

WVE prepositioned for lean season support by advancing partnership engagements with World Vision Taiwan and the National Disaster Management Agency (NDMA). This aimed to facilitate delivery and distribution of 880 metric tonnes (MT) of rice to the most vulnerable households in 13 constituencies through the Food-for-Asset Project.

In FY24, WVE observed an increase in the number of people at risk of facing food insecurity, with 80% households documented to be facing moderate or severe food insecurity, according to the Food Insecurity Experience Scale Global Standard Scale (FIES-GSS); however, only 6% households were food insecure. According to the Coping Strategies Index, this is lower than the 30% national average.



38,474

People receiving Food Aid



8,700

Households receiving Food Aid



Households facing moderate or severe food insecurity, according to the Food Insecurity Experience Scale Global Standard Scale (FIES-GSS), increased from **30% in FY23 to 80% in FY24**



Households who are food insecure, according to the Coping Strategies Index, decreased from **30% in FY23 to 6% in FY24**





STATEMENT OF COMPREHENSIVE INCOME

for the year ended 30 September 2024

	2024 USD	2023 USD
Income	16 005 296	14 966 053
Project expenses	(16 169 656)	(15 147 491)
Gross deficit for the year	<u>(154 370)</u>	<u>(181 438)</u>
Other income	124 799	128 720
Operating deficit for the year	<u>(39 561)</u>	<u>(52 718)</u>
Finance income	39 561	52 718
Net surplus for the year	<u>-</u>	<u>-</u>

STATEMENT OF FINANCIAL POSITION

as at 30 September 2024

	2024 USD	2023 USD
ASSETS		
Non-current assets		
Property and equipment	922 772	692 755
Current assets		
Financial asset	111 755	106 808
Accounts and other receivables	405 254	267 212
Cash and cash equivalents	2 825 480	1 188 555
	<u>3 342 489</u>	<u>1 562 575</u>
Total assets	<u>4 265 261</u>	<u>2 255 330</u>
FUNDS AND LIABILITIES		
Reserves attributable to the organisation		
Accumulated funds	2 862 137	970 109
LIABILITIES		
Current liabilities		
Accounts payable	1 290 237	1 186 357
Employee benefit provisions	112 887	98 864
Deferred income	-	-
	<u>1 403 124</u>	<u>1 285 221</u>
Total funds and liabilities	<u>4 265 261</u>	<u>2 255 330</u>

FUNDING COMMITMENT

The total committed funding for the year ended 30th September 2024 was US\$18.102 million compared to US\$16.494 million in FY23. The increase in funding received was mainly attributed to additional grant funding from local donors as well as GIK income as a result of rice donation from Taiwan.

The funding trend by sector is depicted in the figures below from the current strategy cycle (FY21 – FY25)

Sector Name	FY21 BUDGET	FY22 BUDGET	FY23 BUDGET	FY24 BUDGET
Community Engagement & Child Sponsorship	3,522,490.00	2,983,932.00	3,072,432.00	2,879,535.44
HIV, Health & Nutrition	3,444,575.00	2,994,172.00	3,056,737.00	4,462,371.00
Water Sanitation & Hygiene	3,578,780.00	5,266,107.00	4,667,455.00	4,244,213.00
Livelihoods & Resilience	1,956,640.00	2,426,540.00	1,914,157.00	1,944,040.00
Emergency Response	11,889,673.00	6,074,254.00	2,098,297.00	2,942,997.00
Support Costs	1,478,371.00	1,689,027.00	1,684,801.00	1,629,230.00
TOTAL	<u>25,870,529.00</u>	<u>21,434,032.00</u>	<u>16,493,879.00</u>	<u>18,102,386.44</u>

Special Thanks to our Donors



Our Support Offices:

WV United States, WV Korea, WV Austria, WV Taiwan,
WV Japan, WV Germany, WV Italy

How do I DONATE to WVE and become part of the transformation?

1. Payroll Giving
2. Direct Deposits
3. Gifts-in-Kind
4. Grant Funding



To know more about giving to us, please contact (+268) 7617 6356

World Vision Eswatini

P.O. Box 2870, Mbabane, H100
Portion 105 of Farm 2,
Corner Mahleka St. and Golf Course Road, Mbabane
Tel: 2404 1102/6/9 | Fax: 2404 1125

Learn more:

www.wvi.org/eswatini

Search for "World Vision Eswatini" on social media as well:

Facebook



Instagram



Twitter (X)



LinkedIn



Youtube

